

ASSET MANAGEMENT - GUIDELINES AND PRINCIPLES FOR SUSTAINABLE INVESTMENTS

02.2021

Version 4.0

ASSET MANAGEMENT - GUIDELINES AND PRINCIPLES FOR SUSTAINABLE INVESTMENTS

CONTENT

1.	Introduction.....	3
2.	Definitions and Interpretations.....	5
3.	Investment Approach	6
3.1	ESG Risk Assessment Process	6
3.2	Exclusions.....	7
3.3	Global Standards (UN Global Compact).....	7
3.4	Controversies	8
4.	ESG Engagement.....	9
4.1	Direct Dialogue	9
4.2	Formal Engagement Process	10
4.3	Collaborative Engagement	10
5.	ESG Goals and Consistency	12
5.1	Transparency	12
5.2	Sustainable Strategies	13
6.	Divestment	15
7	ESG-Integration in Risk Management.....	16
7.1	Sustainable Risks and Climate Change	16
7.2	Risk Strategy and Monitoring.....	16

1. INTRODUCTION

Increasingly, ESG (environmental, social, and governance) criteria are being considered alongside economic factors in investment decisions.

The MainFirst Group (hereinafter "MainFirst") recognised the importance of an active sustainable investment approach early on. MainFirst firmly believes that asset management can make an important contribution to conserving the environment, to promoting and safeguarding social progress, and to questioning and insisting on corporate governance. As a company, MainFirst is doing its part to ensure that progress and value creation will now be closely linked to sustainability.

„As a future-oriented, active asset manager, we are well aware of our social responsibility. That is why sustainability is one of the key areas of focus for MainFirst. Consequently, ESG factors are given careful consideration in investments and generate long-term positive added value for society, investors and the investments.

As a result, on 12 May 2015, MainFirst committed itself to sustainability in its active asset management process through compliance with the "UN Principles of Responsible Investments" and becoming a signatory thereto. With this commitment, MainFirst has been following an active portfolio management style with a sustainability focus for more than five years. The "Principles for Responsible Investment" (PRI) were developed by the United Nations in 2006 to integrate ESG principles into investment practice. Then in 2015, when the "UN Sustainable Development Goals (SDGs)" were launched, they helped to set goals for the principles that are intended to shape a sustainable future. Since then, various national and international initiatives have highlighted the scale of the investment opportunities created by these goals.

MainFirst's Portfolio Management Team actively incorporates **environmental, social and governance (ESG) factors** into its investment and decision-making process and, in doing so, assumes responsibility.

The "ESG principles and guidelines" defined within the Group are implemented, monitored and documented by internal standards that apply throughout the Group, particularly in the areas of portfolio management, risk management and compliance. In addition, MainFirst undertakes to publish useful information and documents from the implementation and application of these ESG standards.

MainFirst works continuously to develop standards, criteria and processes in order to improve its ESG capabilities, while achieving a positive performance of the assets under management.

MainFirst operates within the framework of a sustainable investment approach based on the following principles:

Thorough analysis.

Conscious exclusion.

Active selection.

Sustainable investment.

The Portfolio Management Team avoids investments that are not in line with its values and standards in terms of sustainability. The dual effect of positive value creation for the investor and society can be achieved by investing in assets that have a positive impact on both target groups.

These principles and the processes described apply to the subsidiaries of MainFirst Holding AG, which currently includes the following companies:

- MainFirst Affiliated Fund Managers (Deutschland) GmbH,
- MainFirst Affiliated Fund Managers (Switzerland) AG,
- MainFirst Affiliated Fund Managers S.A.

This guideline sets out the internal procedures, documentation requirements, and escalation and monitoring scenarios.

The aim is to:

- document the group-wide integration of ESG into the investment process
- define engagement and dialogue strategies



2. DEFINITIONS AND INTERPRETATIONS

ESG risks	are government or corporate sustainability risks related to environmental, social or governance issues.
Strategy, portfolio or portfolios	are the mutual funds or special mandates of MainFirst Asset Management.
Portfolio Management	are the teams within the MainFirst Group that make the investment decisions (purchase and sale) for the individual portfolios of assets managed by MainFirst.

3. INVESTMENT APPROACH

The investment approach and processes are largely determined by clearly defined criteria. These form binding principles for the selection and investment process. In addition to the product-specific investment objectives and statutory investment limits, ESG criteria in the selection and investment process reflect another important aspect that the Portfolio Management Team takes into account in its analysis, selection and investment decisions.

Considering ESG criteria and the resulting opportunities does not correspond to negative impacts on returns. Investors benefit from the ESG-compliant investments made by the Portfolio Management Team and participate in the responsibility for society, the environment, and progress.

Within the team-specific investment approach, investment opportunities are assessed and evaluated according to ESG criteria. The Portfolio Management Team systematically analyses the target investments using a broad range of environmental, social and governance factors. These are based on independent studies, ratings, publications, research, and internal standards. Information about the investment process is outlined and published in the annual sustainability report.

Four fundamental elements are considered in the analysis of investment decisions:

- ESG risk assessment
- Exclusions
- Global standards (UN Global Compact)
- Controversies

3.1 ESG RISK ASSESSMENT PROCESS

In general, the risk assessment is based on the classification provided by an external service provider. This risk assessment measures the extent to which the economic value of a company is jeopardised by ESG factors or, in more technical terms, the degree to which a company has not managed its ESG risks. The ESG rating of either a company or a country consists of a quantitative score that can be assigned to a particular risk category.

The ESG risk assessments are integrated into both the investment decision process and the portfolio construction. These ESG risk assessments can be interpreted at an absolute level per issuer or on a relative basis compared to the benchmark or the investment universe. Depending on the strategy, different approaches can be followed.

3.2 EXCLUSIONS

MainFirst has defined a negative list that, according to the “exclusion principle”, sets out criteria that fundamentally prohibit an investment:

MainFirst excludes investments in companies or products issued by companies that violate the UN Convention on Cluster Munitions. No deviations from this principle are permitted.

In addition, MainFirst excludes investments in companies (and their affiliates) that generate more than 50% of their revenues from military contracts, weapon-related products and/or services.

Furthermore, when implementing the product-specific investment policies of the investment funds managed by MainFirst, the Portfolio Management Team may also impose additional restrictions, as outlined below:

- **Energy and environment**

- Nuclear power

- Thermal coal

- Oil and gas

- Genetically modified plants and seeds

- **Value-based sectors**

- Adult entertainment

- **Tobacco and cannabis**

- **Defence and military involvement**

- Controversial weapons

- Military contracts

- Small arms

- Riot control

3.3 GLOBAL STANDARDS (UN GLOBAL COMPACT)

MainFirst takes compliance with global standards such as the UN Global Compact seriously. The management of any infringements is critically reviewed and documented in the investment process. If there is any doubt, in the case of sustainable products the ESG Advisory Board can also be consulted. The ESG Advisory Board can provide recommendations for exclusion or divestment, which can be implemented as outlined in this guideline.

3.4 CONTROVERSIES

MainFirst regularly reviews the investment universe for potential controversies. Classification is initially carried out by an external data supplier. For sustainable products, if the highest level is reached, the ESG Advisory Board must be consulted to determine whether, from an ESG perspective, a company should continue to be included in the portfolio. If the investment is excluded, this will be documented and executed in accordance with this guideline.

4. ESG ENGAGEMENT

MainFirst aims to maintain an ongoing dialogue (direct or indirect) with the Management, right up to the Supervisory Board of the relevant companies.

In the interest of ensuring that ESG standards are implemented, MainFirst is committed to maintaining an active dialogue with companies, particularly in cases where MainFirst is able to exert a certain influence on the issuer due to its current positioning or any investment decision dependent on it.

Our commitment should be seen in context and in relation to the size and age of the company, the available resources, as well as its importance within the sub-fund, in order to take a pragmatic and holistic approach towards further development within the scope of our opportunities with companies.

The engagement process is based on three different pillars:

- Direct dialogue
- Formal engagement process
- Community engagement

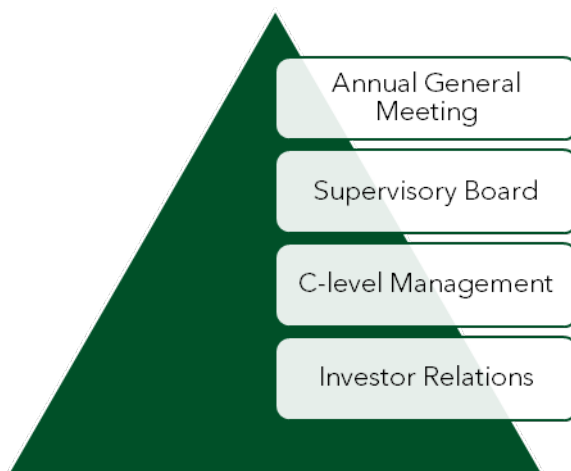
4.1 DIRECT DIALOGUE

Direct dialogue can take place with companies, regardless of whether they represent a sustainable or a conventional product. The Portfolio Management Team uses these discussions to understand the companies' business policies and strategies, as well as their sustainability principles in order to weigh them against MainFirst's corporate principles. This direct dialogue can be documented in detail.

4.2 FORMAL ENGAGEMENT PROCESS

As part of the formal engagement process, Portfolio Managers of sustainable products should make contact with the companies. These discussions should focus on the companies’ ESG risk profiles. Therefore, the Management of selected companies is contacted directly and options to better integrate environmental, social or governance aspects within the particular company are discussed.

The following different escalation levels should be considered:



Any issues can be discussed first with the Investor Relations department then with Management. After this, non-compliance with agreed, documented targets or milestones can be reported to the Supervisory Board.

In addition, the right to speak and vote at the Annual General Meeting can be exercised in the event that further escalation is necessary.

4.3 COLLABORATIVE ENGAGEMENT

MainFirst defines collaborative engagement as supporting initiatives by several investors or other capital contributors, with the aim of improving environmental, social or other factors. This engagement may involve public and private companies, countries or regions.

Collaborative engagement may be proposed by the ESG Task Force or the ESG Advisory Board and initiated by the ESG Committee.

The aim of the collaborative engagement is a constructive exchange with corporate leaders to improve the individual ESG profile in cases where MainFirst has little direct influence through the aforementioned approaches.

For example, MainFirst has joined the Carbon Disclosure Project (CDP) initiative. This international non-profit organisation was founded in London in 2000 with the aim of collecting high-quality climate-related corporate data and motivating investors, companies and governments to take action against climate change.

Once a year, the CDP asks companies to submit data and information about the opportunities and risks of climate change, CO₂ emissions, and relevant strategies and measures. The standardised questionnaire is sent to the largest listed companies worldwide. The annual CDP reports are available free-of-charge to all interested parties on the organisation's website. Investors who support the CDP also have access to non-public corporate responses. In total, more than 800 institutional investors support the initiative.

MainFirst uses this data for further analysis and targeting within the dialogue strategy.

5. ESG GOALS AND CONSISTENCY

MainFirst is committed to focusing on achieving a **dual effect** as part of its active portfolio management. In addition to the goal of generating an appropriate increase in value for the investor, the investments should also take advantage of and bring about comprehensive opportunities and prospects in the context of environmental and social considerations. In order to provide comprehensive information to its clients, MainFirst aims for the highest level of transparency.

5.1 TRANSPARENCY

In accordance with the Regulation (EU) 2019/2088 of the European Parliament and of the Council of 27 November 2019 on the sustainability-related disclosure requirements in the financial sector, MainFirst is committed to transparency regarding:

- Strategies for managing sustainability risks
- Adverse sustainability impacts at the company level
- Remuneration policies in connection with addressing sustainability risks
- The consideration of sustainability risks
- Adverse sustainability impacts at the portfolio level
- The promotion of environmental or social aspects in pre-contractual information
- Pre-contractual information in the case of sustainable investments
- The promotion of environmental aspects of sustainable investments on websites
- The promotion of environmental aspects of sustainable investments in regularly published reports

MainFirst does not currently take into account any adverse impacts of investment decisions on sustainability factors (so-called Principle Adverse Indicators), as the relevant data that would be required to determine and weight the adverse sustainability impacts is currently not available to the market to a sufficient extent. By 30 December 2022 at the latest, MainFirst will provide information on whether and how the major adverse impacts of investment decisions on sustainability factors will be taken into account.

5.2 SUSTAINABLE STRATEGIES

In defining sustainable strategies, MainFirst uses the approach of the BVI (the German Investment Funds Association) and assigns the strategies into one of the following categories - basic, ESG, and impact:

Basic	ESG	Impact
<ul style="list-style-type: none"> • ESG opportunities / risks taken into account according to the criteria of "ESG integration" • Integration approach disclosed 	<ul style="list-style-type: none"> • Dedicated ESG strategy • Minimum exclusions 	<ul style="list-style-type: none"> • Impact-related Investments • No serious violations of the UN Global Compact

In the basic category, ESG is systematically integrated into the investment process and implemented within the context of engagement, for example by exercising voting rights, actively exercising shareholder or creditor rights, and/or through dialogue with issuers.

Funds and mandates are assigned to the ESG category if a dedicated ESG strategy is specified and minimum exclusions are complied with. The minimum exclusions for the ESG classification, and therefore for Article 8 under Regulation (EU) 2019/2088 (SFDR), include:

- **Minimum exclusions for companies:**
 - Manufacture and/or distribution of military equipment > 10% of turnover
 - Zero tolerance for:
 - Cluster munitions (Oslo Convention)
 - Anti-personnel mines (Ottawa Treaty)
 - B and C weapons according to the respective UN Conventions
 - Tobacco production > 5% of turnover
 - Production and/or distribution of coal > 30% of turnover
 - Serious infringements against the UN Global Compact (without positive perspectives)
- **Minimum exclusions for sovereign issuers:**
 - Countries designated as 'Not Free' in the annual analysis carried out by Freedom House

Impact-related funds require, in addition to the exclusions listed in the preceding categories, a high minimum percentage of sustainable investments.

For the public mutual funds, the allocation that can be found in the current fund prospectus applies first.

Special fund mandates are allocated internally and published within the framework of the Eurosif Transparency Code.

6. DIVESTMENT

The Portfolio Management Team will actively divest (sell) an investment if the analyses and evaluations of publicly available information and documents, or those obtained as part of the active dialogue, reveal a breach of its ESG standards. In doubtful cases or in the interest of clarifying disputed analysis results, the Portfolio Management Team can involve the ESG Advisory Board to initiate a further evaluation and decision. If necessary, an external party or data provider may be consulted to provide a comprehensive analysis and evaluation. If non-compliance with ESG criteria is confirmed, the Portfolio Management Team must re-establish compliance with the regulations within 30 trading days and carry out a divestment. This is monitored by both the Investment Compliance and Risk Management Teams and reported to the ESG Committee.

7 ESG-INTEGRATION IN RISK MANAGEMENT

Sustainability risks are environmental, social or corporate governance events or conditions, the occurrence of which may have a real or potentially negative impact on the asset, financial and earnings position, as well as on the reputation, of a company within the MainFirst Group. For companies that manage portfolios on behalf of third parties, sustainability risks also relate to the managed portfolios (funds).

MainFirst is well aware of the importance of managing sustainability risks. As a result, ESG-related risks are already taken into account in the analysis of potential transactions as part of managing the portfolio and are monitored after the transaction has taken place. They are also integrated accordingly in the Risk Management Department. ESG risks are identified, assessed, monitored, managed and communicated.

7.1 SUSTAINABLE RISKS AND CLIMATE CHANGE

No separate "sustainability risks" risk category has been defined, as sustainability risks can have a significant impact on all known risk categories. Instead, MainFirst regards them as a factor that has a significant impact on known risk categories (credit risk, market price risk, reputational risk, etc.).

Sustainability risks have the potential to negatively impact all business areas and risk categories. Sustainability risks can become relevant in the short term as well as in the medium to long term and create a need for action.

The MainFirst Group takes the long-term risks resulting from climate change very seriously. A forward-looking analysis, as proposed by the TCFD (Task Force on Climate-related financial disclosures) and the UN PRI, will be used for this purpose. To this end, MainFirst has entered into a cooperation with 'right. based on science' to counter the effects on the climate.

7.2 RISK STRATEGY AND MONITORING

The MainFirst Group has adapted its existing risk management strategy to address sustainability risks. MainFirst is committed to implementing the UNPRI sustainability standards. These are incorporated into the Group's ESG standards and principles. Compliance with the ESG standards and principles as well, as the risk strategy of the MainFirst Group, is continuously reviewed. This includes checking whether risk categories are affected by sustainability risks in a product- and company-specific manner, and if so, which ones, and whether these are sufficiently taken into account when determining risk measurement procedures.

Based on this, the MainFirst Group will review the methods and procedures for identifying, assessing, managing, monitoring, and reporting sustainability risks at regular intervals. The results will be communicated transparently within the organisational structure of the MainFirst Group.

Based on all available information, the Risk Management Department will continuously monitor whether and how processes for identifying, measuring, managing, and reporting sustainability risks can be either systematically or selectively improved.

MainFirst will also take sustainability risks into account in the company's regular risk inventory and check whether the existing company-specific stress tests reflect sustainability risks in a suitable manner or whether new or modified company-specific stress tests need to be created for this purpose.

Specific ESG ratings can be used to determine the sustainability aspects of financial investments and, if necessary, to obtain additional information on sustainability risks. In light of the aforementioned points, MainFirst will not simply adopt such ESG ratings for the purpose of assessing the sustainability of a financial investment, but will carry out a plausibility check in accordance with the principle of proportionality.

In the event of discrepancies regarding the interpretation of the translation, the original document in German shall prevail.

DISCLAIMER

The sole purpose of this document is to provide product information for advertising purposes. It is not a mandatory document required by law or regulation. The information contained in this document does not constitute a solicitation, offer or recommendation to buy or sell fund units, or to engage in any other kind of transaction. The sole purpose of the information is to give the reader an understanding of the main characteristics of the fund, such as the investment process. It is not intended, in whole or in part, as a recommendation to invest. It is no substitute either for the investor's own considerations or for other forms of legal, tax or financial information and advice. Neither the management company nor its employees or governing bodies can be held liable for losses resulting directly or indirectly from the use of the contents of this document or in any other connection with this document. The sole binding basis for the purchase of units is the sales documents as last amended (prospectus, KIIDs and, supplementing these, the semi-annual and annual report), in which detailed information on the purchase of fund units as well as the inherent risks and opportunities can be found. These are available free of charge in German, English and French from the management company MainFirst Affiliated Fund Managers S.A., 16, rue Gabriel Lippmann, L-5365 Munsbach, as well as from MainFirst Affiliated Fund Managers (Deutschland) GmbH, Kennedyallee 76, D-60596 Frankfurt am Main, in electronic or printed form. The sales documents mentioned and other supplementary information can be downloaded from the management company's website: www.mainfirst-invest.com/en/fund-services. Author: MainFirst Affiliated Fund Managers S.A. This document and the information it contains are directed solely at professional clients and suitable counterparties within the meaning of Directive 2014/65/EU on markets in financial instruments (MiFID II). It may not be forwarded to retail clients within the meaning of MiFID II, nor may it form the basis for their investment decisions. This document may not be forwarded to persons domiciled in countries in which fund distribution is not permitted or authorisation is required for distribution. Units may only be offered to persons in such countries if this offer complies with the applicable legislation and it is ensured that the distribution and publication of this document, as well as the offer or sale of units, is not restricted under the legal system in question. In particular, the fund will not be offered either in the United States of America or to US persons (within the meaning of Rule 902 of Regulation S of the U.S. Securities Act of 1933, as amended), nor on their behalf, for their account or in favour of persons representing a US person. Past performance is not an indication or guarantee of future performance. Fluctuations in the value of the underlying financial instruments, their returns and changes in interest rates and exchange rates mean that the value of units in a fund and the associated returns can rise as well as fall, and are not guaranteed. The valuations contained in this document are based on several factors, including current prices, estimates of the value of the underlying assets and market liquidity, as well as further assumptions and publicly accessible information. In principle, prices, values and returns can rise as well as fall. In the worst case, an investor can lose all of the invested capital. Assumptions and information are subject to change without prior notice. The value of the invested capital and the price of fund units, along with the resulting returns and dividend amounts, are subject to fluctuation and may fall to zero. Therefore, positive past performance is no guarantee of positive future performance. In particular, there is no guarantee that the invested capital will retain its value; thus, there is no guarantee that, upon sale or redemption, the value of the invested capital or of the fund units held will be the same as the original capital amount invested. Foreign currency investments are subject to additional exchange rate fluctuations/currency risks; this means that the performance of such investments also depends on the volatility of the foreign currency, which can adversely affect the value of the invested capital. Holdings and allocations may change. There is no guarantee that the market forecasts will prove accurate. Any mention of risks in this publication should not be regarded as a full disclosure of all applicable risks or a comprehensive description thereof. We expressly refer to the detailed risk descriptions in the prospectus. We cannot guarantee that the information is accurate, complete or up-to-date. Content and information are subject to copyright. We cannot guarantee that the document complies with all legal or regulatory requirements for documentation in place in countries other than Luxembourg. Note: The most important technical terms are explained in the glossary at www.mainfirst-invest.com/en/glossary. Information for Investors in Switzerland: Country of domicile of the Investment Fund is Luxembourg. Representative in Switzerland is UBS Fund Management (Switzerland) AG, Aeschenplatz 6, CH-4052 Basel. Paying Agent in Switzerland is UBS Switzerland AG, Bahnhofstrasse 45, CH-8001 Zurich. The prospectus, key investors information document (KIID), articles of association as well as the annual and semi-annual reports are available free of charge from the Representative.